

REED-USA

LOVA *Guncrete* GUNITE MACHINE Dry-Mix Shotcrete Machine

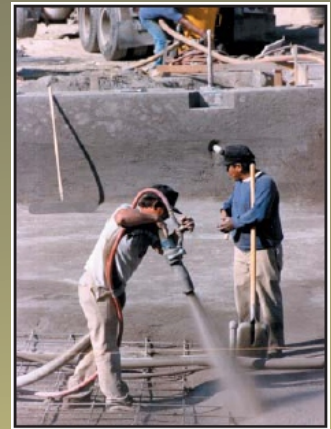
LOVA provides a very even flow of material which allows uniform hydration and smooth placement. The adjustable output of material may be increased without sacrificing the quality of the application.

STANDARD FEATURES:

- Continuous feed hopper with bag breaker
- 2 Blade or 5 blade agitator
- Screen and direct drive 5hp, "8AM" air motor on LOVA 8
- Screen and direct drive 9hp, "16AM" air motor on LOVA 16
- Optional electric drive (LOHE)
- Optional "Bulk-bag" adapter
- Optional ultra-light non-stick rotary feed wheel.

APPLICATIONS:

- Pools and Spas
- Refractory Spraying
- Tunnel Support
- Mine Support
- Concrete Repair
- Zoos and Parks
- Rockscaping
- Slope Stabilization
- Excavations
- Channels
- Piers
- Sea Walls
- Sewers
- Retaining & Fire Walls
- Dams & Reservoirs
- Sand & Rock Backfill
- Concrete Pipe
- Ditches



CONFIGURATIONS (Small Open Vertical-Feed Air Powered):

Sr. No.	Feed Bowl Pockets	Hose Size (I.D.)	Maximum Aggregate Size	Air Compressor (Recommended size at 100 psi)	Maximum Output**	Common Applications
1.	30	¾" (1.9cm)	¼" (3.5mm)	125cfm (3.5m ³ /min) 8AM 215cfm (6m ³ /min) 16AM	2yd ³ /hr (1.5m ³ /hr)	Fine, detailed articulated artistic-type work, rockscaping, patch, repair.
2.	30	1" (2.5cm)	¼" (3.5mm)	210cfm (6.0m ³ /min) 8AM 300cfm (9.0m ³ /min) 16AM	2yd ³ /hr (1.5m ³ /hr)	Fine, detailed articulated artistic-type work, rockscaping, patch, repair.
3.	21	1 ¼" (3.2cm)	¼" (7mm)	315-375cfm (9-11m ³ /min) 8AM 375-450cfm (11-13m ³ /min) 16AM	5yd ³ /hr (3.8m ³ /hr)	Refractory spraying, repair work, smooth finish
4.	21	1 ½" (3.8cm)	¾" (10mm)	375-450cfm (11-13m ³ /min) 8AM 450-600cfm (13-17m ³ /min) 16AM	6yd ³ /hr (4.6m ³ /hr)	Refractory spraying, repair work, smooth finish
5.	20	1 ½" (3.8cm)	½" (13mm)	375-450cfm (11-13m ³ /min) 8AM 450-600cfm (13-17m ³ /min) 16AM	8yd ³ /hr (6.1m ³ /hr)	Civil Construction, Higher-Volume Refractory spraying, smooth finish
6.	15	2" (5cm)	½" (13mm)	450-600cfm (13-17m ³ /min) 8AM 600-750cfm (17-21m ³ /min) 16AM	12yd ³ /hr (9.2m ³ /hr)	Civil Construction, Concrete spraying, Less (Less Volume than with LA (Large Aggregates) system)
7.	15LA.	2" (5cm)	¾" (16mm)	450-600cfm (13-17m ³ /min) 8AM 600-750cfm (17-21m ³ /min) 16AM	12yd ³ /hr (9.2m ³ /hr)	Swimming Pool Construction, Conveying aggregate for backfill, civil construction
8.	12	2" (5cm)	¾" (16mm)	450-600cfm (13-17m ³ /min) 8AM 600-750cfm (17-21m ³ /min) 16AM	12yd ³ /hr (9.2m ³ /hr)	Swimming Pool Construction (Less Volume than with 2 ½" System – 15 L.A. bowl provides smoother finish)
9.	12	2 ½" (6.3cm)	¾" (19mm)	600-750cfm (17-21m ³ /min) 8AM 750-900cfm (21-26m ³ /min) 16AM	15yd ³ /hr (11.4m ³ /hr)	Civil Construction Spraying, Highest Volume (15 L.A. bowl provides smoother finish)

REED-USA SOVA *Concrete* GUNITE MACHINE Dry-Mix Gunite Machine

SOVA provides a very even flow of material which allows uniform hydration and smooth placement.

The adjustable cutput of material may be increased without sacrificing the quality of the application. The compact SOVA is capable of spraying through hoses from 3/4" to 1-1/2" (19 to 38 mm) inside diameter.

STANDARD FEATURES:

- Oversized water separator
- Optional dust suppression system
- Continuous feed hopper with bag breaker
- Material Agitator
- Screen and direct drive 5 hp, 8 AM, air motor
- Optional hopper safety hood



APPLICATIONS:

- Refractory
- Tunnel
- Concrete Repair
- Excavations
- Slope Stabilization
- Rockscaping
- Pools
- Mines
- Channels
- Piers
- Sea Walls
- Sewers
- Retaining & Fire Walls
- Dams & Reservoirs
- Sand & Gravel Backfill
- Concrete Pipe
- Ditches



CONFIGURATIONS (Small Open Vertical-Feed Air Powered):

Sr. No.	Feed Bowl Pockets	Hose Size (I.D.)	Maximum Aggregate Size	Air Compressor (Recommended size at 100 psi)	Maximum Output**	Common Applications
1.	18	3/4" (1.9cm)	1/8" (3.5mm)	125cfm (3.5m ³ /min)	2yd ³ /hr (1.5m ³ /hr)	Fine, detailed artiled artistic-type work, rockscaping, patch, repair.
2.	18	1" (2.5cm)	1/4" (7mm)	210 cfm (6.0m ³ /min)	2yd ³ /hr (1.5m ³ /hr)	Fine, detailed artiled artistic-type work, rockscaping, patch, repair.
3.	18	1 1/4" (3.2cm)	1/4" (7mm)	315-375 cfm (9-11m ³ /min)	6yd ³ /hr (4.6m ³ /hr)	Refractory spraying, repair work, smooth finish
4.	16	1 1/4" (3.2cm)	1/4" (7mm)	315-375 cfm (9-11m ³ /min)	6yd ³ /hr (4.6m ³ /hr)	Refractory spraying, repair work, smooth finish
5.	16	1 1/2" (3.8cm)	3/8" (10mm)	315-375 cfm (9-11m ³ /min)	9yd ³ /hr (6.9m ³ /hr)	Refractory spraying, repair work, smooth finish