

# ROCKDRIL

## NEWSLETTER OF - RDA RANGE OF PRODUCTS

- Water Wells
- Pilot Holes
- Servicing Holes
- Blasting



TRUCK MOUNTED RIG

- Seismic Drills
- Jack Hammers
- Drilling Tools
- Sand Blasting



AIR-COMPRESSOR

- Servicing Holes
- Blasting
- Access Roads
- Anchoring
- Reverse
- Circulation



AIR MOBIL-432

- Servicing Holes
- Blasting
- Access Roads
- Anchoring
- Reverse
- Circulation



AIR MOBIL-TH120

- Blasting



CDBH-43

- Seismic
- Servicing Holes
- Blasting
- Access Roads
- Anchoring
- Water Well



ECODRIL-432

- Tunneling
- Mining / Quarrying
- Anchor Bolts



MEERKATX25

- Seismic Shot holes
- Shallow Water Well



PD-12

- Seismic
- Mineral Exploration
- Micropilling
- Access Roads
- Anchoring
- Blasting
- Water Well
- Servicing Holes etc.



RC-15T

- Seismic
- Blasting
- Micropilling
- Water Well
- Access Roads
- Servicing Holes
- Anchoring



SE-15

- Tunnels
- Mining
- Pilot Holes
- Anchoring



Tunnel-Dril-432-HD

- Seismic
- Water Well
- Reverse Circulation
- Micro Piles
- Access Roads
- Anchoring
- Blasting
- Servicing Holes
- Others



TWD-20

- Seismic Exploration
- Construction



WHEELDRILL-432

- Anchoring
- Drainage Holes
- Blasting
- Seismic Exploration
- Micro-Piling



ECOMOBIL-432

- Seismic Shot-holes
- Micro-piling
- Blasting
- Surface Mining
- Shallow
- Water wells



MMD-15

**SECURA  
GROUPS**

EXCLUSIVELY REPRESENTED IN PAKISTAN BY:

**SECURA GROUPS**

Email : [ceo@secura-group.com](mailto:ceo@secura-group.com)

Website : [www.secura-group.com](http://www.secura-group.com)

Mobile : 0333-3185263



# CD3TTM H

## DRILLING EQUIPMENT

The CD3TTM H is drill rig that is mounted on a 10 ton truck, along with a 900 CFM-150 PSI air compressor which is run by a John Deere engine, for its easy and comfortable transportation.

The CD3TTM H is designed to drill with a 12" (305 mm) DTH Hammer and 19 1/2" (495 mm) bit, up to 3 meters depth, as well as it can drill with a 8" (203 mm) DTH Hammer and 12" (305 mm) bit up to a depth of 90 meters.

### APPLICATIONS

- Water Wells
- Pilot Holes
- Servicing Holes
- Blasting



### DIMENSIONS AND WEIGHT (approx.)

Length	5890 mm
Width	1000 mm
Weight	8.5 ton

### WATER INJECTION PUMP

Engine	Hydraulic
Type	triple piston
Capacity	10 L/min Adjustable flow
Max. Pressure	35 kg/cm <sup>2</sup>

### ROTATION SYSTEM

Top head is mounted out of the rails for an easy managing of the pipes.

Box type	Gear rectum
Rotation	45 rpm
Torque	346 kg-m (3400 Nm)

### FEED SYSTEM

Traverse cylinder	Hidráulico de 1800 mm de carrera
Head travel	3.6 m
Pull-up capacity	6000 kg
Pull-down capacity	3600 kg

### WINCH

Planetary with spring applied hydraulic release break, with 30m cable.

Spool capacity	40 m - Ø 1/2"
Line pull	2 ton

### HYDRAULICS OUTRIGGERS

Hydraulic outriggers are fitted to the outer corners of the rig for easy and accurate leveling.

### CONTROL PANEL

All controls gauges are grouped at the operator's station within sight of the borehole.

### HYDRAULIC SYSTEM

General	System of gears double
Capacity of tank	60 L
Operation pressure	190 bar

### COMPRESSOR

Type	1 Stage
Engine	John Deere
	6 Cylinders diesel engine
Rated power	300 HP / 2200 rpm
Capacity	900 cfm
Pressure	150 psi

### DRILLING CAPACITY

Max. Diameter	19 1/2" (495 mm)
Max. Depth	100 m
Drill pipe length	3 m
Max. Diameter ADM	12" (304 mm)

### OPTIONAL

#### CARROUSEL

Type	Electrohydraulic
Capacity	6 pipes
Weight	300 kg (out pipes)

#### ENGINE

Model	Yanmar
	3 cylinder diesel engine
	35 hp / 3000 rpm
Fuel capacity	48 L

#### COOLING SYSTEM

Cooling system	Water
----------------	-------

### INSTALLATION

Truck mounted	10 ton.
Pickup mounted	3.5 ton.
Compressor trailer mounted	5 ton



EXCLUSIVELY REPRESENTED IN PAKISTAN BY:

**SECURA GROUPS**

Email : [ceo@secura-group.com](mailto:ceo@secura-group.com)

Website : [www.secura-group.com](http://www.secura-group.com)

# ROCKDRIL



## AIR-COMPRESSORS

Rockdril portable diesel engine-powered screw air compressors are compact and light units designed for a variety of applications, rock drills, blast hole, anchor drilling and water well drilling machines etc. Depending on the capacity, in addition to the hammer, it can be used to power pneumatic rotation motors, feed motors and drifters.

Rockdril compressors have an asymmetrical profile screw air end, engineered for optimum performance and economy in operation. Oil is injected constantly to ensure cooling and lubricating resulting in virtually no wear on the screws and consistently providing high volumetric efficiency. The screws are mounted on anti-friction bearings, which are lubricated by the same cooling oil, ensuring a long service life.

### APPLICATIONS

- Seismic Drills
- Jack Hammers
- Drilling Tools
- Sand Blasting

## AIR-COMPRESSORS

MODEL:	CD400-150	CD500-220	CD900-175	CD700-300
ENGINE:	LEYLAND/CUMMINS	LEYLAND/CUMMINS	LEYLAND/CUMMINS	LEYLAND/CUMMINS
ENGINE TYPE:	DIESEL	DIESEL	DIESEL	DIESEL
CYLINDERS:	6	6	6	6
SPEED (RPM):	2,200	2,400	2,200	2,200
POWER (HP):	170	220	320	350
AIR VOLUME:	400 CFM / 11M3/M	500 CFM / 14M3/M	900 CFM / 25M3/M	700 CFM / 19M3/M
MAX. PRESSURE:	150 PSI / 10 BAR	220 PSI / 15 BAR	175 PSI / 12 BAR	300 PSI / 20 BAR
DESIGN:	OPEN FRAME	OPEN FRAME	OPEN FRAME	OPEN FRAME
WEIGHT APPROX:	1300 KG	2100 KG	3500 KG	3500 KG
LENGTH:	3450 MM	3600 MM	3790 MM	3400 MM
WIDTH:	1850 MM	2250 MM	2050 MM	1860 MM
HEIGHT:	2250 MM	2300 MM	3000 MM	3000 MM



**EXCLUSIVELY REPRESENTED IN PAKISTAN BY:**  
**SECURA GROUPS**

Email: [secura@cyber.net.pk](mailto:secura@cyber.net.pk)  
 Website: [www.secura-group.com](http://www.secura-group.com)

# ROCKDRIL



## Airmobil 432

### **DIMENSIONS & WEIGHT (approx measurements)**

Length	3490 mm
Width	1300 mm
Height	3560 mm
Weight	430 Kg

### **PNEUMATIC ROTATION MOTOR**

Model	CD2R 4 Cylinder Air Motor
Rated power	1.62 Kw
Max. Speed	60 rpm
Torque	60 kg-m (590 Nm)
Air Consumption	2000L/min (70 cfm)
Max. Air pressure	6 Kg/cm <sup>2</sup> (85psi)
Weight	30.5 Kg

### **PNEUMATIC FEED MOTOR**

Model	CD2A 4 Cylinders air motor
Rated Power	1.62 Kw
Max. Speed	60 rpm
Torque	60 kg-m (590 Nm)
Air Consumption	2000L/min (70 cfm)
Max. Air Pressure	6 Kg/cm <sup>2</sup> (85 psi)
Weight	25 Kg

### **DRILLING CAPACITY**

Max. Hole Diameter	6" (152mm)
Max. Depth	50 m
Drill Pipe Length	2000 mm
Horizontal Movement	10 degrees

### **FEED SYSTEM**

Chain	Paso 1" Pitch
Head travel	2300 mm
Pull-Capacity	1300 kg
Pull down Capacity	1300 kg

### **CHASSIS**

Driven by two rolling tires, with inclination system. Valve control table Chassis mounted.

### **OPTIONAL PNEUMATIC ROTATION MOTOR HD**

Model	CD2RHD 4 Cylinder Air Motor
Rated Power	1.62 Kw
Max. Speed	50 rpm
Torque	72 kg-m (706 Nm)
Air Consumption	2000L/min (70 cfm)
Max. Air Pressure	6 Kg/cm <sup>2</sup> (85 psi)
Weight	42 Kg

**REVERSE CIRCULATION** Recovery of inaltered sample of up to 98%  
360 degrees horizontal and 180 degrees vertical

### **TURNTABLE**

### **AMORTIGUADOR DE CHOQUE LUBRICATOR**

### **APPLICATIONS**

- Servicing Holes
- Blasting
- Access Roads
- Anchoring
- Reverse Circulation



**EXCLUSIVELY REPRESENTED IN PAKISTAN BY;**

**SECURA GROUPS**

Email: [secura@cyber.net.pk](mailto:secura@cyber.net.pk)  
Website: [www.secura-group.com](http://www.secura-group.com)

# ROCKDRIL



## Airmobil TH-120

### DIMENSIONS & WEIGHT (approx measurements)

Length	3490 mm
Width	1500 mm
Height	3560 mm
Weight	436 +/- Kg

### DRIFTER

Model	RD 120F
Type	Pneumatic
Rated percussion power	7.2 Kw
Max. Speed	180 rpm
Air Consumption	167L/min (354 cfm)
Max. Air pressure	6 bar (87psi)
Weight	70 Kg

### PNEUMATIC FEED MOTOR

Model	CD2A
	4 Cylinders air motor
Rated Power	1.62 Kw
Max. Speed	60 rpm
Torque	60 kg-m (590 Nm)
Air Consumption	2000L/min (70 cfm)
Max. Air Pressure	6 Kg/cm <sup>2</sup> (85 psi)
Weight	25 Kg

### DRILLING CAPACITY

Max. Hole Diameter	3-1/2" (96mm)
Std. Drill Rod Length	1800 mm
Horizontal Movement	10 degrees

### FEED SYSTEM

Chain	1" Pitch
Head travel	2300 mm
Pull-Capacity	1300 kg
Pull down Capacity	1300 kg

### CHASSIS

Driven by two rolling tires, with inclination system. Valve control lable Chassis mounted.

### OPTIONAL TOOLS OR ADD-ONS:

Turntable	360 degrees horizontal & 180 degrees vertical
-----------	---

Wrenches  
Shock Absorber  
Air Line Lubricator

### APPLICATIONS

- Servicing Holes
- Blasting
- Access Roads
- Anchoring
- Reverse Circulation



EXCLUSIVELY REPRESENTED IN PAKISTAN BY:

SECURA GROUPS

Email: [secura@cyber.net.pk](mailto:secura@cyber.net.pk)

Website: [www.secura-group.com](http://www.secura-group.com)

# ROCKDRIL



## CDBH - 43H

### **DIMENSIONS & WEIGHT (approx)**

Length	6.2 m
Width	2.6 m
Height (Vertical Column)	5.1 m
Weight	4.4 ton

### **ROTATION SYSTEM**

Type	Hydraulic Rotary Head
Speed Rotation	110 rpm
Torque	117 kg-m (1150 Nm)

### **CARROUSEL**

Type	Automatic
Capacity	6 Rods of 3M. L
Pull-up-capacity	1445 kg
Pull-down-capacity	1445 kg

### **TRACKS**

Width	300 mm
Length	1800 mm
Width (track to track)	2100 mm
Hydraulic motor	12.5 hp
Speed	2 km/h
Gradeability	30%

### **CONTROL PANEL**

All Controls gauges are grouped at the operators station within sight of the borehole.

### **HYDRAULIC SYSTEM**

General	Hydraulic Pump
Tank capacity	90 L
Operation pressure	138 Bar

### **COMPRESSOR**

Type	1 stage
Engine	John Deere 6 Cylinders diesel engine
Rated power	225 HP / 2400 rpm
Capacity	435 cfm
Pressure	220 psi

### **DRILL CAPACITY**

Max. Diameter	6" (152 mm)
Max. Depth	50 m
Drill pipe length	3000 mm
Drill pie diameter	89 mm

### **OPTIONAL**

#### **DUST COLLECTOR**

Type	Cyclon
Collector capacity	700 cfm

### **APPLICATIONS**

- Blasting



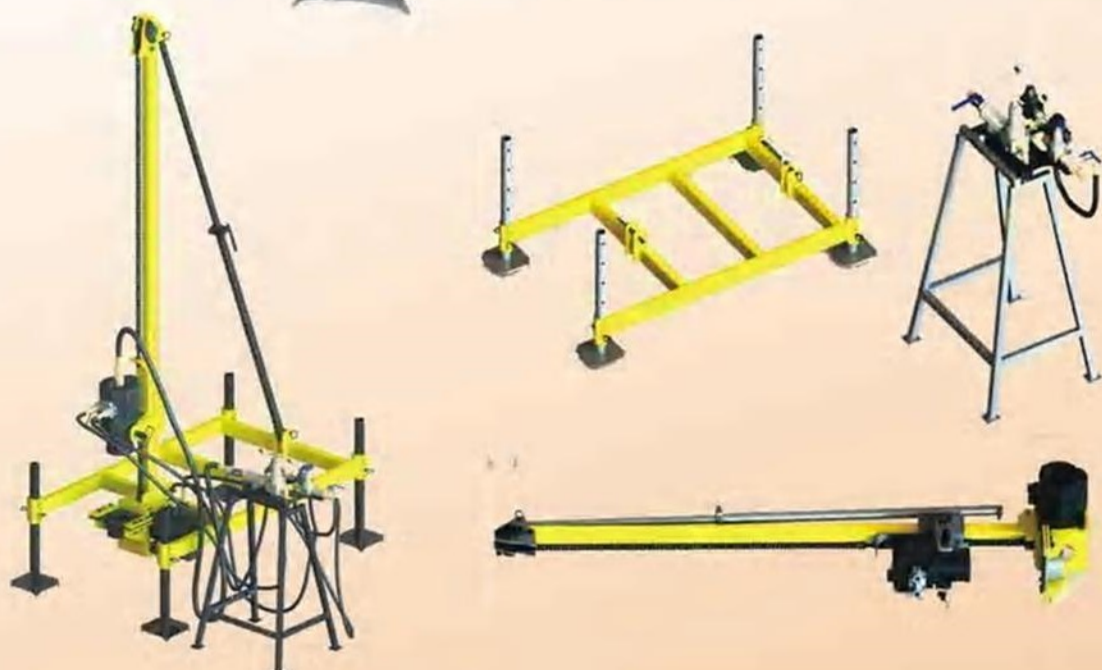
**EXCLUSIVELY REPRESENTED IN PAKISTAN BY:**

**SECURA GROUPS**

Email: [secura@cyber.net.pk](mailto:secura@cyber.net.pk)

Website: [www.secura-group.com](http://www.secura-group.com)

# ROCKDRIL



## ECODRIL 432 (MAN-PORTABLE DRILL / JACROB)

### **DIMENSIONS & WEIGHT (approx)**

Length	1450 mm
Width	1080 mm
Height (Mast Up)	2870 mm
Weight	220 Kg

### **PNEUMATIC ROTATION MOTOR**

Model	CD2A
	4 Cylinder air motor
Rated power	1.62 Kw
Max. speed	60 rpm
Torque	60 kg-m (590 Nm)
Air consumption	2000L/min (70 cfm)
Max. air pressure	6 Kg/cm <sup>2</sup> (85 psi)
Weight	30.5 Kg

### **PNEUMATIC FEED MOTOR**

Model	CD2R
	4 Cylinder air motor
Rated power	1.62 Kw
Max. speed	60 rpm
Torque	60 kg-m (590 Nm)
Air consumption	2000L/min (70 cfm)
Max. air pressure	6 Kg/cm <sup>2</sup> (85 psi)
Weight	25 Kg

### **DRILL CAPACITY**

Max. Diameter	4" (102 mm)
Max. Depth	30 m
Drill Pipe Length	1500 mm

### **FEED SYSTEM**

Head travel	1800 mm
Pull-up capacity	1300 Kg
Pull-down capacity	1300 Kg

### **GENERAL**

The ecodril can be easily separated into 4 parts without the use of any special tools. Each module weighing less than 70kg.

1. Chassis	65 Kg
2. Mast	70 Kg
3. Rotation Motor	31 Kg
4. Control Table	54 Kg

### **CONTROL PANEL**

The panel is separated from the chassis for a better mobility and view while drilling.

### **OPTIONAL**

Wrenches  
Lubricator

### **APPLICATIONS**

- Seismic
- Servicing Holes
- Blasting
- Access Roads
- Anchoring
- Water Well

# ROCKDRIL



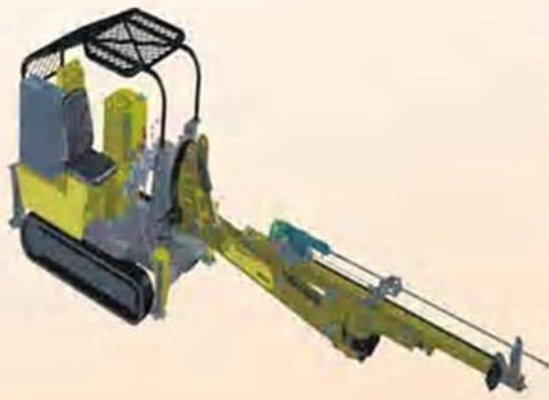
**EXCLUSIVELY REPRESENTED IN PAKISTAN BY:**

**SECURA GROUPS**

Email: [secura@cyber.net.pk](mailto:secura@cyber.net.pk)

Website: [www.secura-group.com](http://www.secura-group.com)

# ROCKDRIL



HOLE RANGE



## MEERKAT 25X

### MIN DIMENSIONS & DRY WEIGHT

Width	1400 mm
Height	2250 mm
Weight	2.3 tons

### ELECTRIC MOTOR

Type	4 pole
Power	40 hp
Rpm	1470
Voltage	380

### WATER INJECTION PUMP

Type	3 piston
Capacity	10 L/min adjustable flow
Max. pressure	35 kg/cm <sup>2</sup>

### UNDERCARRIAGE

Steel shoe, available with rubber pads  
Travel speed of 3km/h

### CONTROL PANEL

All controls are located strategically to obtain better optical view when drilling is in process.

### HYDRAULIC SYSTEM

Pump	Piston pump / Gear Pump
Tank Capacity	60 L
Filtration	10 micron
Cooling System	Air
Operating Pressure	200 bar (2900 psi)

### DRILLING CAPACITY (in optimal conditions)

Drifter Power	7 Kw
Drifter Rpm	0-150-310
Max. Torque	200 Nm
Swivel	For water/air injection
Drilling Angles	360° in any direction
Max. Diameter	36 mm (R25)
Max. Depth	10 m
Drill Rod Length	2.4 meter

### OPTIONAL MODIFICATIONS

Pneumatic top hammer  
DTH hammer  
Short length mast for narrow tunnel drilling

### APPLICATIONS

- Tunneling
- Mining / Quarrying
- Anchor Bolts



EXCLUSIVELY REPRESENTED IN PAKISTAN BY:  
**SECURA GROUPS**

Email: [secura@cyber.net.pk](mailto:secura@cyber.net.pk)  
Website: [www.secura-group.com](http://www.secura-group.com)



# ROCKDRIL



LIGHT  
WEIGHT

Man  
Portable

HOLE RANGE

50-100  
mm

## PD-12

### Seismic Shot Hole Made Easy---- MOTORIZED MAN-PORTABLE ROTARY FLUSH DRILL

The PAKDRILL - 12 or PD - 12 is a man-portable light weight drilling rig suitable for drilling shot holes in very difficult access areas. The PD - 12 is designed to be used with rotary drag bits but can also be used with other tools for different applications. Flushing can be done using compressed air, water or mud with drilling fluid.

The maximum drilling depth will always depend on the man power strength for lifting but can easily drill up to 20 meters with 4-5 operators (depending on capability and skills of operators, geological formation, hole diameter and weight of tools)

#### APPLICATIONS

- Seismic Shot holes
- Shallow Water Wells

#### DIMENSIONS & WEIGHT

Length	930 mm
Width	875 mm
Height	428 mm
Weight	55 kg

#### ENGINE

Type (Kohler single cylinder gasoline engine)	
Rated power	5.5HP (4kw)
Cooling System	By Air

#### FEED

Man power pull-up force designed to be handled by 4 operators

#### ROTATION SYSTEM

Type: Reduction gearbox connected via pulleys to a gasoline engine with safety guard.

Rotation speed: 0 to 70 Rpm controlled by a manual belt tension clutch.

Torque: 575Nm

Swivel: G1 inlet, Air, Water or drilling fluid compatible.

#### STABILIZERS

4 micro stabilizers for drill pipe break-out and machine resting.

#### DRILLING CAPACITY

Max diameter: 101 mm (4")  
Max recommended depth: 15-20 meters

#### OPTIONAL MODIFICATIONS

- Diesel engine
- Drill mast for auto-feed system using hand winch

MODIFICATION FOR OTHER APPLICATION ARE POSSIBLE



EXCLUSIVELY REPRESENTED IN PAKISTAN BY:

SECURA GROUPS

Email: [secura@cyber.net.pk](mailto:secura@cyber.net.pk)

Website: [www.secura-group.com](http://www.secura-group.com)



## RC-15T

HOLE RANGE



The RC-15T is a trailer-mounted drilling machine that can be towed by most pick up trucks in the market. It is a fully hydraulic machine designed for drilling with reverse circulation equipment and tools for sample recovery.

Conventional drilling can be done.

The RC-15T is designed to drill up to 30 meters with a 4" (100mm) Reverse circulation down the hole hammer.

Using conventional drilling methods and tools the rig may achieve a depth of up to 75m.

(Depths depend on the ground formation, operator skill, compressor capacity and weight of the tools being used)

### APPLICATIONS

- Seismic
- Mineral Exploration
- Micropiling
- Access Roads
- Anchoring
- Blasting
- Water Well
- Servicing holes etc.

## RC-15T

### DIMENSIONS & WEIGHT

Length	3550mm
Width	2.1m
Height	3600mm
Weight	1.6 tons

### ENGINE

Type	Diesel / Gasoline
Rated power	36 hp
Cooling System	air

### HYDRAULIC SYSTEM

Pump	Double gear pump
Tank Capacity	45L
Cooling System	air
Operating Pressure	170bar

### FEED

Head Travel	1800mm
Pull up capacity	2000kgs

### ROTATIONAL SYSTEM

Type	Hydraulic motor
Rotational Speed	95 rpm
Torque	122kg-m (1220 Nm)
Swivel	for compilation of sample

### DUST COLLECTOR

Type	Cyclon
Capacity	700 cfm

### STABILIZER

4 hydraulic jacks allows the machine to be leveled in most terrains more efficiently.

### DRILLING CAPACITY

Max. Diameter	4 1/2" (108mm)
Max. Depth	30m



# ROCKDRIL



## SE - 15

### (MAN-PORTABLE DRILL / JACROB)

#### **DIMENSIONS & WEIGHT (approx)**

Length	1575 mm
Width	945 mm
Height	2650 mm
Weight	310 Kg

#### **ENGINE**

Model	Kolher / Ch750 2 Cylinders engine (Gasoline)
Rated power	27 hp
System of cooling	Air

#### **HYDRAULIC SYSTEM**

General	Double Gear pump
Capacity of the tank	25 L
System of cooling	Air
Operating Pressure	120 bar

#### **ROTATION SYSTEM**

Type	Hydraulic motor
Rotation speed	0/150 rpm
Torque	68 kg-m (670 Nm)
Weight	25 Kg

#### **FEED SYSTEM (HYDRAULIC)**

Type	Hydraulic motor
Rotation speed	0/150 rpm
Torque	56 kg-m (550 Nm)
Weight	25 Kg

#### **DRILL CAPACITY**

Max. Diameter	4" (102 mm)
Max. Depth	30 m
Length drill pipe	1500 mm

#### **FEED SYSTEM**

Head travel	1700 mm
Pull-up capacity	1270 Kg
Pull-down capacity	1270 Kg

#### **CHASSIS**

The SE15 can be easily separated into 6 parts without the use of any special tools.

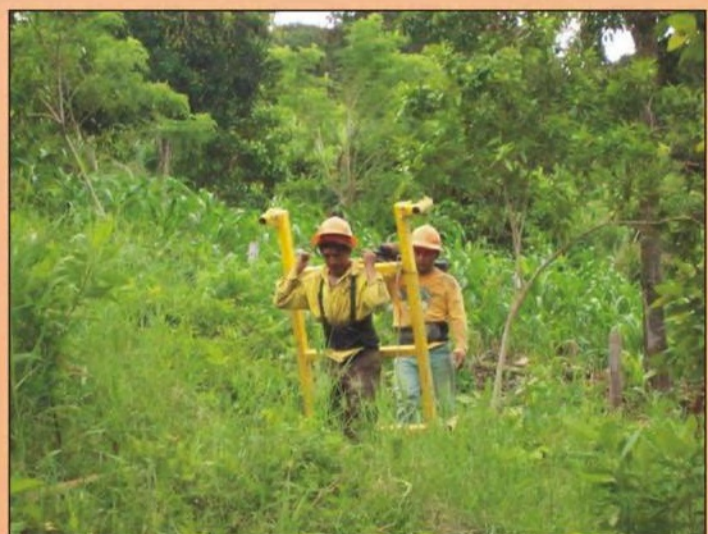
1. Chassis	40 Kg
2. Kohler engine	68 Kg
3. Hydraulic pump & cooler	40 Kg
4. Hydraulic tank & control panel	68 Kg
5. Mast & feed motor	64 Kg
6. Rotation motor & swivel	38 Kg
Total weight approx.	310 Kg

#### **CONTROL PANEL**

All controls gauges are grouped at the operators station within sight of the borehole.

#### **APPLICATIONS**

- Seismic
- Blasting
- Micropiles
- Water Well
- Access Roads
- Servicing Holes
- Anchoring



**EXCLUSIVELY REPRESENTED IN PAKISTAN BY:**

**SECURA GROUPS**

Email: [secura@cyber.net.pk](mailto:secura@cyber.net.pk)

Website: [www.secura-group.com](http://www.secura-group.com)

# ROCKDRIL



## TUNEL DRIL 432 HD

### **DIMENSIONS AND WEIGHT (approx)**

Length	4560 mm
Width	1600 mm
Height	1600 mm
Weight	2.0 ton

### **DRILLING CAPACITY**

Diameter	4"
Depth	20 M
Drill Pipe Length	1.2 M (Standard)
Swivel	Rotary with Air / Water Flushing

### **DRILL UNIT (Approx)**

Wheel Diameter	1,000 mm
Weight	42 kg
Height	430 mm
RPM	0-145 rpm
Torque	475 Nm
Max. Intermittent Torque	690 Nm
Working Pressure	140 Bar
Max. Intermittent Pressure	205 Bar

### **APPLICATIONS**

- Tunnels
- Mining
- Pilot Holes
- Anchoring



**EXCLUSIVELY REPRESENTED IN PAKISTAN BY:**  
**SECURA GROUPS**

Email: [secura@cyber.net.pk](mailto:secura@cyber.net.pk)  
Website: [www.secura-group.com](http://www.secura-group.com)

# ROCKDRIL

LIGHT  
WEIGHT

Man  
Portable

HOLE RANGE

50-203  
mm



## TWD-20 (PORTABLE DRILL)

The TWD-20 (Tower Drill) is a simple, lightweight and portable hydraulic drilling rig with 2 modules, it is designed to have low running and maintenance costs and to be transported by a small pick up truck or ground personnel for drilling in difficult access areas. It can also be adapted to be truck/trailer mounted and can be easily modified for different drilling applications.

The TWD-20 is capable of drilling up to 100 meters depth in optimal conditions depending on the geological formation, compressor capacity, operator skill and weight of the tools being used.

### APPLICATIONS

- Seismic
- Water Well
- Reverse Circulation
- Micropiles
- Access Roads
- Anchoring
- Blasting
- Services holes
- Others

## TWD-20 (PORTABLE DRILL)

### DIMENSIONS & WEIGHT (EST.)

Length	1680mm (Stabilizers out)
Width	1125mm (Stabilizers in)
Height	3300mm
Weight	380kg (Tower) 135kg (Power Pack)

### HYDRAULIC SYSTEM

V-Twin 17HP Diesel Engine Electric start	
Double Gear Pump	
Tank Capacity	30L
Cooling System	Cooler w/Electric Fan
Operating Pressure	140 bar

### ROTATION SYSTEM

Direct drive hydraulic swivel capable of simultaneous air/water flushing (Gear-less swivel)	
Rotation Speed	40 rpm
Torque	965 Nm
Swivel	Air/Water

### FEED

Head Travel	2200mm
Pull-Up Capacity	1400kg

### STABILIZERS

4 mechanical stabilizers with pin locks

### DRILLING CAPACITY

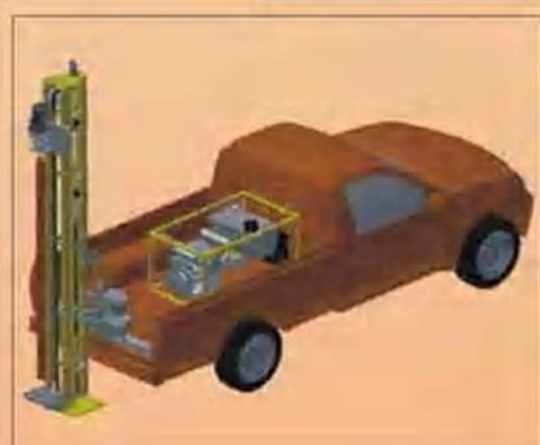
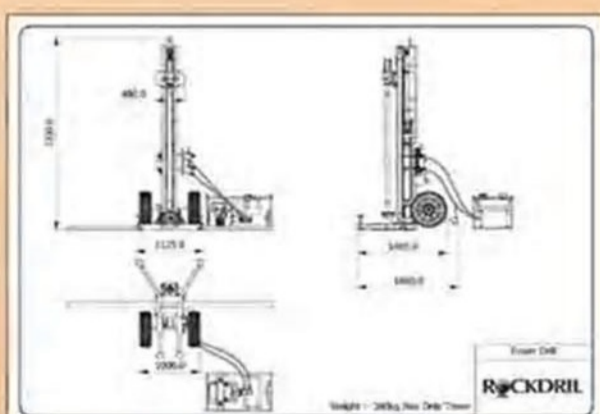
DTH Hammer	6" (152mm)
Rotary	8" (20mm)
Max. Depth	100m

### STANDARD ACCESSORIES

3Lt Air Line lubricator for DTH hammer  
Drill rod wrench set  
4" Electric submersible pump (on TWD-20HD)

### OPTIONAL ADD-ONS/ACCESSORIES

- 17hp Kohler diesel engine worldwide warranty
- 35Hp Kohler Gasoline/Diesel Engine power pack for increased rotary torque to 14720Nm
- Double module hydraulic power pack each module weighting less than 70kg.
- Reverse Circulation drilling
- Pick-Up truck mounting conversion chassis with hydraulic stabilization jacks, night time working light and 2ton winch.

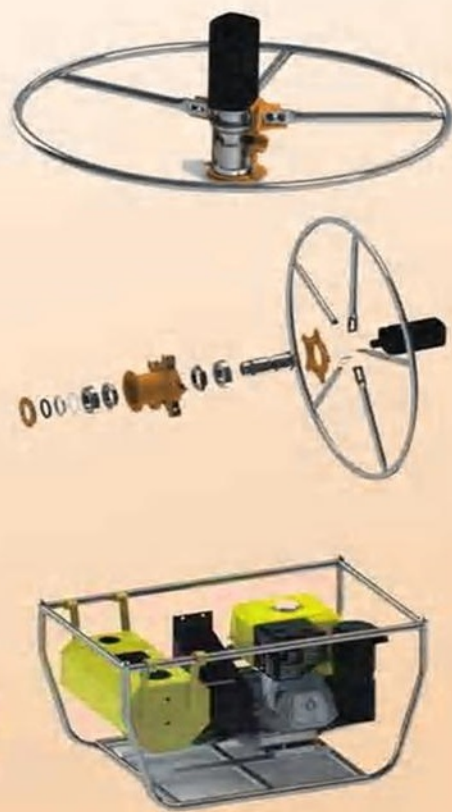


SECURA  
GROUPS

EXCLUSIVELY REPRESENTED IN PAKISTAN BY:  
SECURA GROUPS

Email: [secura@cyber.net.pk](mailto:secura@cyber.net.pk)  
Website: [www.secura-group.com](http://www.secura-group.com)

# ROCKDRIL



## WHEELDRILL432 (MAN-PORTABLE DRILL / JACROB)

### POWER UNIT (Approx)

Length	1,100 mm
Width	590 mm
Height	490 mm
Kerb Weight	86 kg
Hydraulic Tank	20 Lts. (Detachable for easy transp)
Engine	15 HP (Gasoline)

Cooling System:	Mechanical Fan Cooler
Chassis:	Stainless Steel
Hydraulic Pump:	Single Gear Pump 3,600 rpm, Max. pressure 205 Bar

### DRILL UNIT (Approx)

Wheel Diameter	1,000 mm (Stainless Steel)
Weight	42 kg
Height	430 mm
RPM	0-145 rpm
Torque	475 Nm
Max. Intermittent Torque	690 Nm
Working Pressure	140 Bar
Max. Intermittent Pressure	205 Bar

### DRILLING CAPACITY

Drag Bit & Down-The-Hole Hammer

Diameter	4"
Depth	20 M
Drill Pipe Length	1.2 M (Standard)
Swivel	Rotary with Air / Water Flushing

### APPLICATIONS

- Seismic Exploration Shot holes (in extremely in-accessible locations)
- Construction



EXCLUSIVELY REPRESENTED IN PAKISTAN BY:

**SECURA GROUPS**

Email: [secura@cyber.net.pk](mailto:secura@cyber.net.pk)

Website: [www.secura-group.com](http://www.secura-group.com)

# ROCKDRIL



HOLE RANGE



## Ecomobil-432

The Ecomobil 432 is a wagon type, 100% pneumatic drilling rig which can be easily moved or towed using its two tires. Additionally, a 3rd tire can be used for ease of movement. It is designed for drilling with DTH hammer or rotary drag bits up to a depth of 30 meters using 40, 60 or 76 mm DTH drill rods. Depending on geological formation, compressor capacity, skill of the operator and weight of the tools being used greater or less depths may be achieved.

### APPLICATIONS

- ▶ Anchoring
- ▶ Drainage holes
- ▶ Blasting
- ▶ Seismic exploration
- ▶ Micro-piling



### POWER SOURCE

Compressed Air  
Maximum Pressure 7bar

### ROTARY HEAD

Model CD2R  
Type V-shape 4 Cylinder pneumatic motor  
Rated power 1.62 kw  
Max Speed 60 RPM  
Torque 590 NM  
Max air pressure 7 BAR  
Air Consumption 70 CFM  
Weight 30 KG

### FEED SYSTEM

Model CD2R  
Type V-shape 4 Cylinder pneumatic motor  
Rated power 1.62 kw  
Max Speed 60 RPM  
Torque 590 NM  
Max air pressure 7 BAR  
Air Consumption 70 CFM  
Weight 25 KG  
Pull up force 600 KG  
Head travel 1800 MM

### DRILLING CAPACITY

Max diameter 4" (102mm)  
Max depth 30m  
Max drill rod length 1500mm

### GENERAL INFORMATION

The Ecomobil 432 has a chassis mounted control panel as standard but a separate control panel can be used.

Machine weight 240 Kg

The Ecomobil 432 uses the same feed motor as the Airmobil 432 which has 1300 kg pull up force but it has been reduced to have 600 kg for safety reasons and it should not be tampered with.

### OPTIONAL

Pneumatic drifter, 7 kw capacity to be used with R25, R32 or T38 drilling tools.

Air-Line lubricator

Shock absorber (for high air pressure DTH hammers)



EXCLUSIVELY REPRESENTED IN PAKISTAN BY:

**SECURA GROUPS**

Email : [ceo@secura-group.com](mailto:ceo@secura-group.com)  
Website : [www.secura-group.com](http://www.secura-group.com)

# ROCKDRIL

## MMD-15



HOLE RANGE



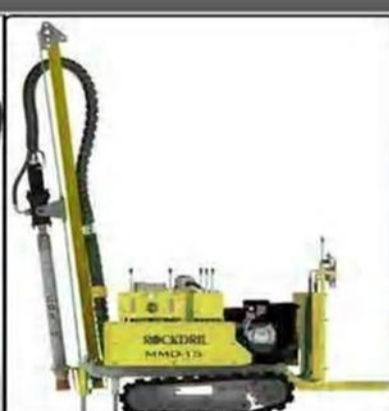
The MMD-15 is a self-propelled mini hydraulic drilling rig suitable for drilling with down the hole hammer and/or rotary drag bits.

The MMD-15 is capable of drilling up to 30 meters in 76mm diameter, greater depths may be achieved depending on the geological formation, compressor capacity, operator skill and weight of the drill tools being used.

It is the ideal rig when drilling is needed in extremely inaccessible locations.

### APPLICATIONS

- ▶ Seismic shot-holes
- ▶ Micro-piling
- ▶ Blasting
- ▶ Surface Mining
- ▶ Shallow water wells



### DIMENSIONS & WEIGHT

Length	2180 mm
Width	880 mm
Height	2715mm
Weight	550 Kg

### ENGINE

Type	Gasoline
Rated power	14 Hp
Cooling system	Air

### HYDRAULIC SYSTEM

Pressurized hydraulic circuit type	
Tank capacity	25L
Cooling system	Air

### UNDERCARRIAGE

Steel shoe, available with rubber pads  
Travel speed of 3.4 km/h

### FEED

Head travel	1700 mm
Pull up capacity	650 kg (modifiable)
Feed speed	0.16 m/s (modifiable)
Drill pipe length	1.5 Meter

### ROTATION SYSTEM

Direct drive hydraulic rotary head with swivel capable of simultaneous air/water flushing (Gear-less rotary head)

Rotational speed	0-50 RPM
Torque	820 Nm

Mast angle adjustment from 0-100°

### STABILIZERS

Composed of 2 hydraulic jacks allowing the machine to be leveled in most terrains more efficiently.

### DRILLING CAPACITY

Max recommended hole diameter	4"(101.6mm)
Max recommended drill-rod diameter	60 mm
Max recommended depth	30 m

### OPTIONAL MODIFICATIONS

- Pneumatic Drifter
- 2 m drill rod mast
- Diesel engine
- Electric power pack

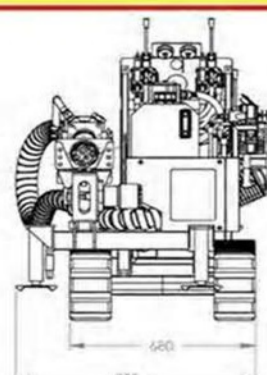
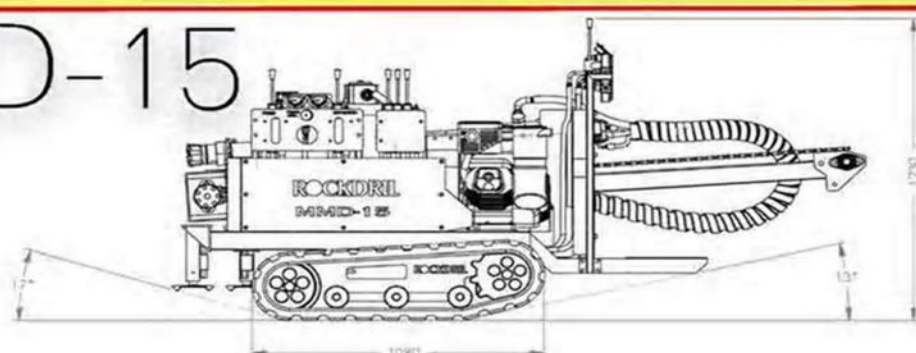
### ROTARY HEADS:

- 0-80 rpm @ max T=500Nm
- 0-65 rpm @ max T=600Nm
- Others upon request

### MODIFICATIONS FOR OTHER APPLICATIONS

ARE POSSIBLE

## MMD-15



EXCLUSIVELY REPRESENTED IN PAKISTAN BY:

**SECURA GROUPS**

Email : [ceo@secura-group.com](mailto:ceo@secura-group.com)  
Website : [www.secura-group.com](http://www.secura-group.com)