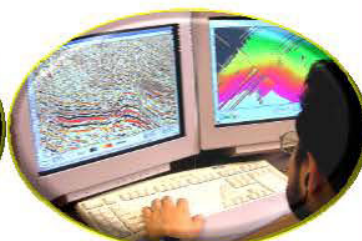
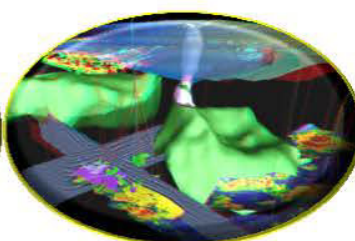
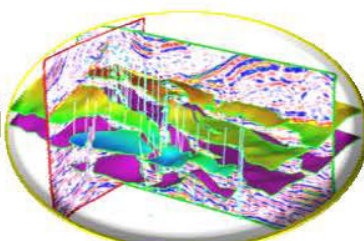
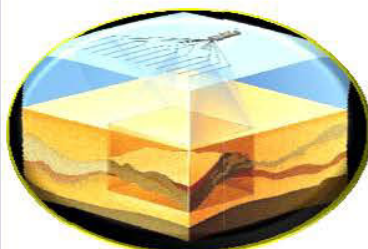


WELL DRILLING INSTITUTE

A set of industry-focussed and field-oriented training modules



TRAINING PROGRAMME:

“SEISMIC INTERPRETATION TECHNIQUES”

(A 30-Credit Hours Extensive Training Programme)

COURSE CODE:

WDI-S.I.T-0010

DESIGNED FOR:

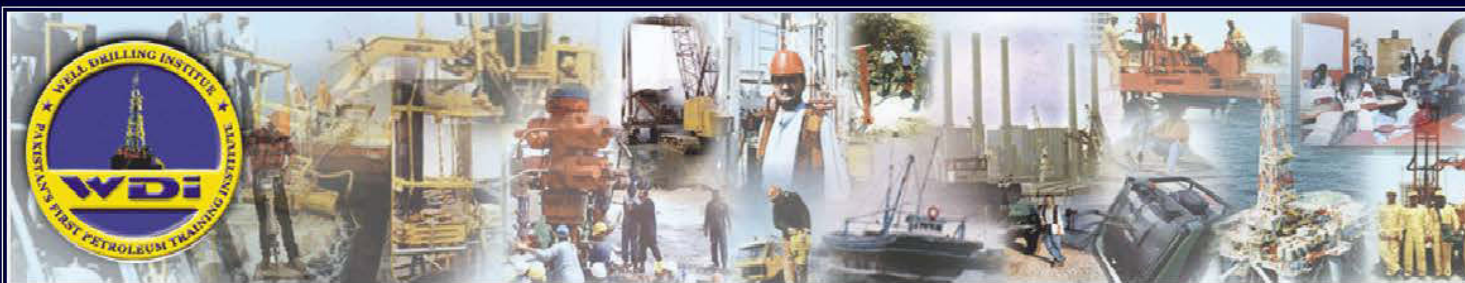
**YOUNG PETROLEUM ENGINEERS, GEOLOGISTS,
GEOPHYSICISTS & RESERVOIR ENGINEERS**

COURSE TO BE CONDUCTED AT:

WELL DRILLING INSTITUTE (WDI)

Suite # 101, 1st Floor, Arab Business Center,
Plot # 5, Bahadurabad Chowrangi, Karachi - Pakistan
Tel: 021 -34925655, 34925654
Email: wdipetroleum@gmail.com
Facebook: [wdi.petroleum](https://www.facebook.com/wdi.petroleum) - Website: secura-group.com

In building good governance one can start at any point in the process — “top” or “bottom” — and produce positive results. Honest, dedicated leaders are essential, and much can be done to identify and cultivate the qualities of leadership in schools and training institutions.



Technical skill shared with educational competence...

SEISMIC INTERPRETATION TECHNIQUES

WDI-S.I.T-0010

WHO SHOULD ATTEND?

This course is recommended for Young Petroleum Engineers, Reservoir Engineers, Geologists and Geophysicists who want to acquire theoretical knowledge and to understand the 2-D, 3-D and 4-D seismic surveys, its design and Data Interpretation techniques.

COURSE OBJECTIVES

This programme is designed to familiarize with 2-D, 3-D and 4-D seismic surveys, its design and interpretation techniques.

Upon completion of the course participants will be able to;

- know the principles of 2-D, 3-D and 4-D seismic reflection,
- determine the optimum 2-D, 3-D and 4-D acquisition parameters,
- know the data interpretation techniques.

PEDAGOGY

Including Presentations and Video Movies etc.

WDI is the Pakistan's 1st Petroleum Industry Training Institute, in Private sector where quality education is imparted according to the need and requirement of the E&P Industry.

WDI Short Certificate Programs (for Engineering Students, as well as for Corporate Levels) are a recommended grouping of courses within a subject area or discipline that support the development of specific knowledge and skills applicable to the workplace. Our training programs are designed, developed and updated by our highly Professional team of training experts with input of our overseas partner institutions, industry, and client/learner feedback.

Our training programs are designed for those who would like to increase their existing and working knowledge of all of the technical aspects of the Oil & Gas Industry. Those already in the industry or from ancillary Industries can increase and boost their technical understanding of the very dynamic energy business. Participants new to the industry can expect to be well prepared for many of the administrative and support-level technical positions that are in high demand today with Energy Companies.

WDI now offers a Short Certificate Program of 30-Credit Hours in "SEISMIC INTERPRETATION TECHNIQUES" on regular (WEEK-DAYS & WEEK-ENDS) basis.

This course aims to provide knowledge and information to the participants who want to understand the 2-D, 3-D and 4-D seismic surveys and its interpretation techniques.

COURSE CONTENT:

1. Seismic Theory, Principles, Velocities and Petro-graphic Properties of Rocks
2. Seismic Reflection and Refraction Surveys
3. Brief Studies about Seismic Velocities and Depth find-out "NMO", "CDP" and "CMP"
4. On-shore/Off-shore Seismic Techniques
5. Introduction to 2-D, 3-D and 4-D Seismic Surveys
6. Application of 2-D and 3-D Seismic Surveys
7. Interpretation Techniques of 2-D and 3-D Seismic Surveys
8. Seismic Section Studies and Correlation Techniques
9. Seismic Noises, Miss-ties and Pitfalls
10. DHI (Direct Hydrocarbon Indicator) & VSP (Vertical Seismic Profiling)
11. Check Short Survey, Sonic Logging and Synthetic Seismogram